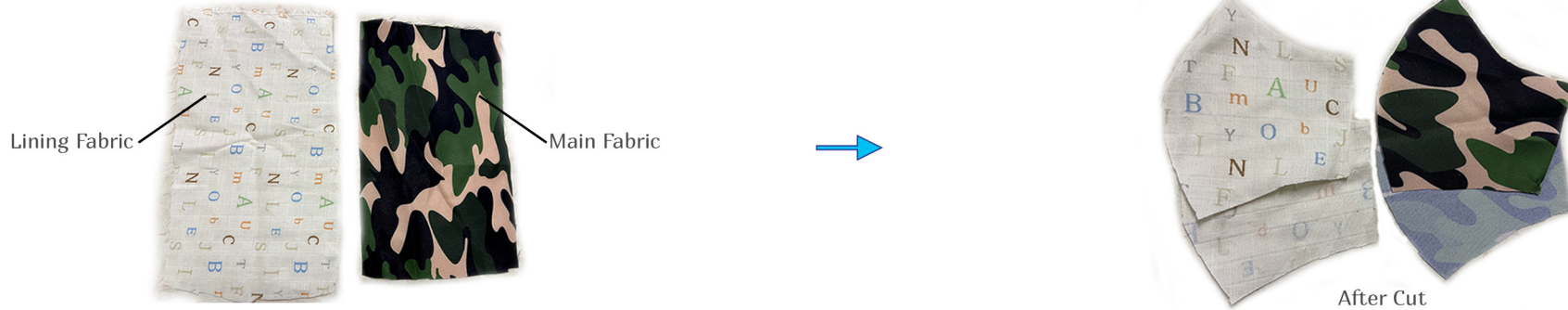


DIY Tutorial - 2-Layers Fabric Face Mask by beadnova.com

STEP 1

Cut the pattern of your size on the fabric

Cut two pcs of main fabrics, two pcs of lining fabrics based on mask pattern. You can use sewing pins to fix paper pattern onto the fabric.



STEP 2

Sew the main fabrics and lining fabrics

At this step, we will sew 2 parts of the fabrics, the curved edge and straight edge.

The curved edge

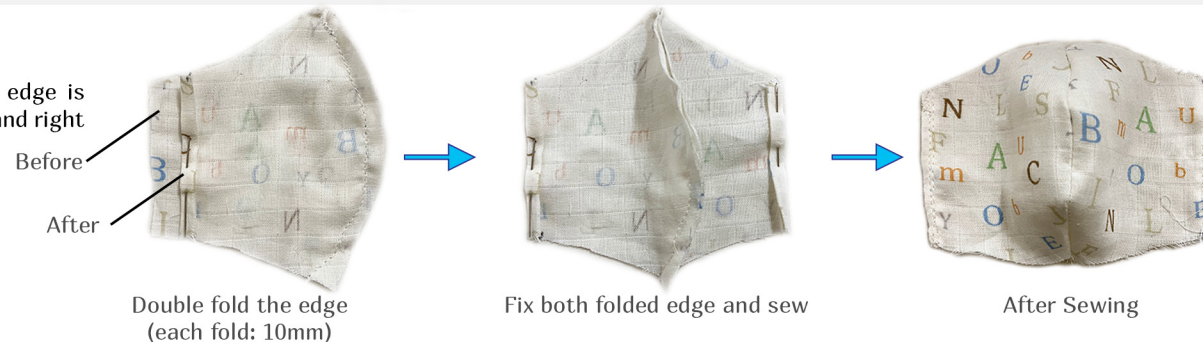
Main Fabrics: Turn the right side of both main fabrics facing each other, wrong side will face to you. Follow the curved edge and sew it with 5mm seam allowance. (In case you don't have sewing pins, you can use pen to draw a line on seam allowance for help.)

Lining Fabric: Just do the same with main fabrics.



The straight Edge

Lining Fabric: Double fold the raw edges. Each fold edge is 10mm (20mm in total) and sew the edge. Do it for left and right edge.



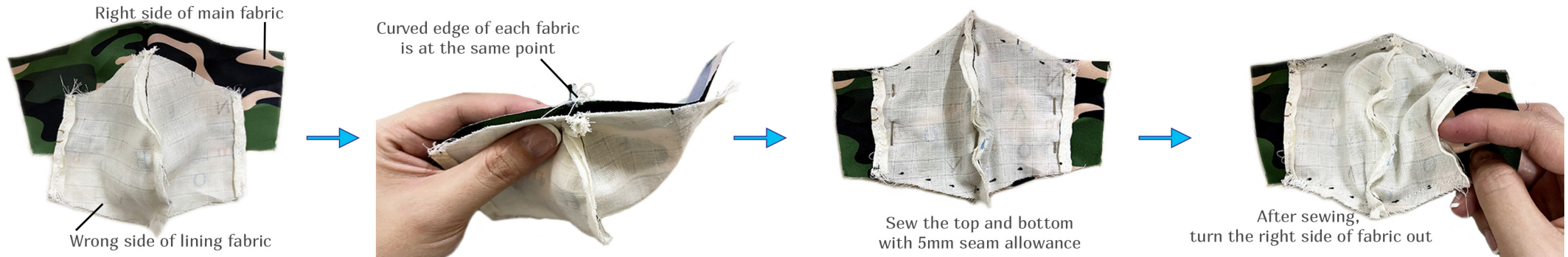
DIY Tutorial - 2-Layers Fabric Face Mask by beadnova.com

STEP 3

Merge main and lining fabrics

Place lining fabric on the main fabric, with right side facing each other, Then sew the top and bottom of wrong side.

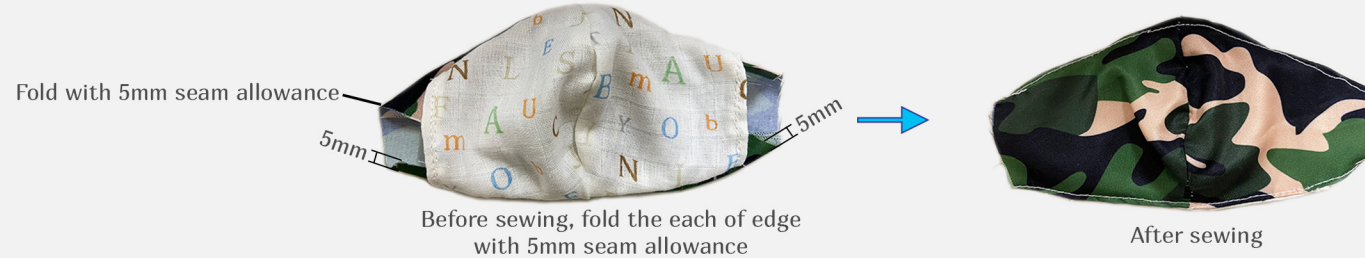
Be sure that the curved edge of each fabric is at the same point and use sewing pins to fix the fabrics. After that, turn the right side of face mask out, we go to another step.



STEP 4

Sew the edge of top and bottom on right side of mask

At this step, the right size of main fabric faces to you, sew the edge of top and bottom to keep the shape well. Remember to fold the end of edge with 5mm seam allowance before sewing.



STEP 5

Add elastic bands at straight side of main fabric

At this step, place the top of elastic bands at the top of straight side, bottom of elastic bands to bottom of straight side, and sew it to fix the elastic bands. Then, double fold the edge forward the lining fabric, then sew the edge from top to end.

